

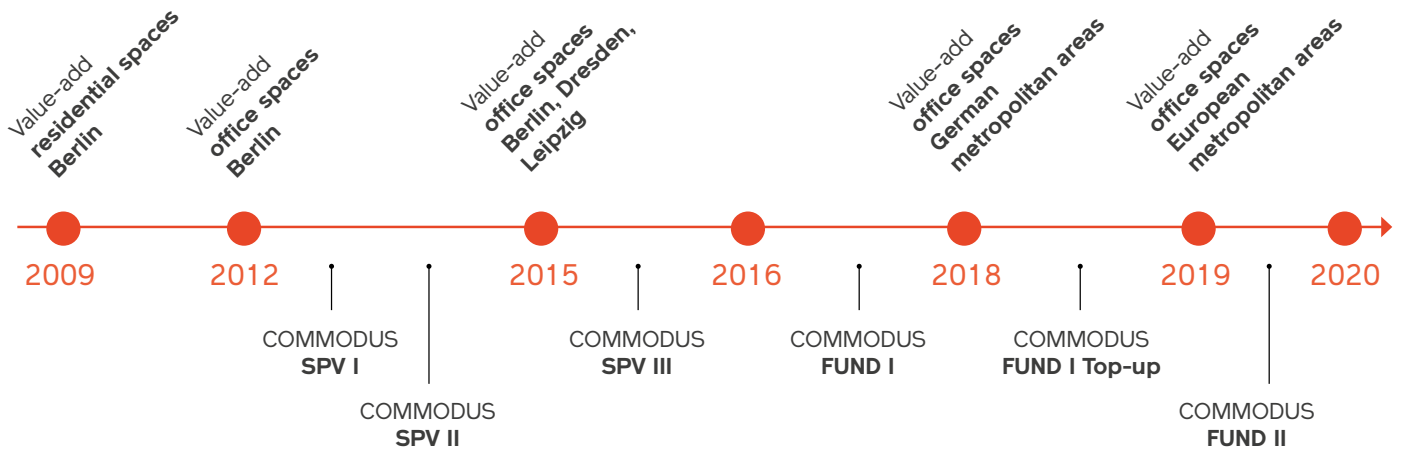
COMMODUS COMPANY PROFILE

AT A GLANCE

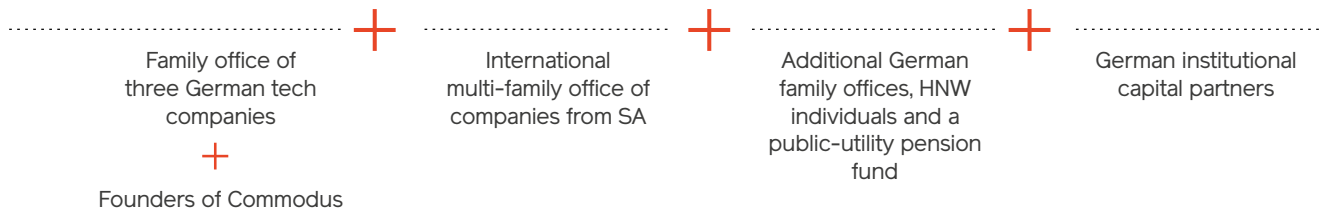
- Commodus is an owner-run investment company looking for investment opportunities in the **value-add and core plus areas**.
- Across Germany, Commodus and Commodus-affiliated companies already hold and manage properties **with an overall value of > €1 billion** in total.
- The capital required for this originates from a small group of **high-capital business families, as well as an increasing number of institutional investors**, and can be called on at the Commodus management team's discretion.
- As a capital management company registered with the Federal Financial Supervisory Authority (BaFin), we aspire to make quick, reliable decisions and thus to act with **a high degree of professionalism**.



THE ORIGINS OF COMMODUS



SOURCE OF THE CAPITAL



INVESTMENT FOCUS

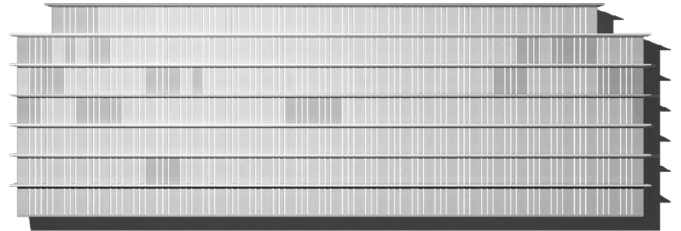
- Commodus focuses on office property in need of value creation in German cities (more than 100,000 inhabitants).
- A need for value creation either means solving a property-specific problem or e.g. a problem in the ownership structure.
- The Commodus investment volume totals up to €100 million per transaction. Thanks to its very flexibly designed investment brief, Commodus is also in a position to seize larger opportunities.



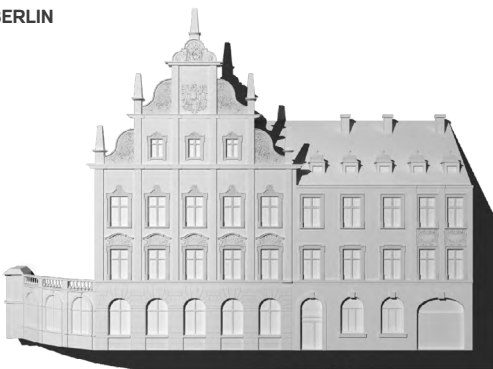
EXTRACT FROM OUR PORTFOLIO



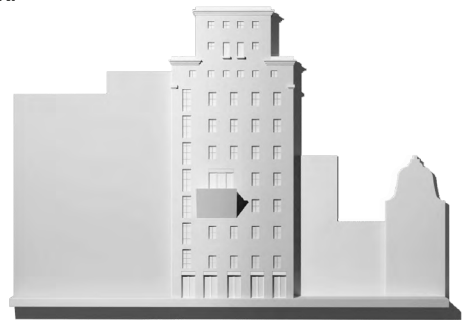
BERLIN



DUSSELDORF



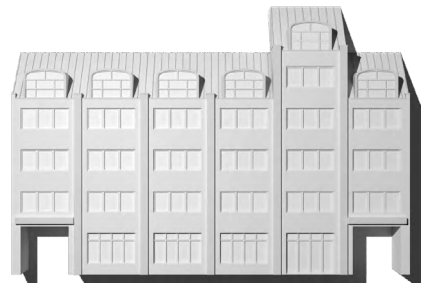
BERLIN



DUSSELDORF



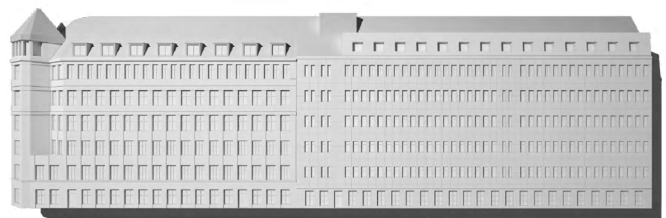
MADRID



HAMBURG



NUREMBERG



BERLIN

